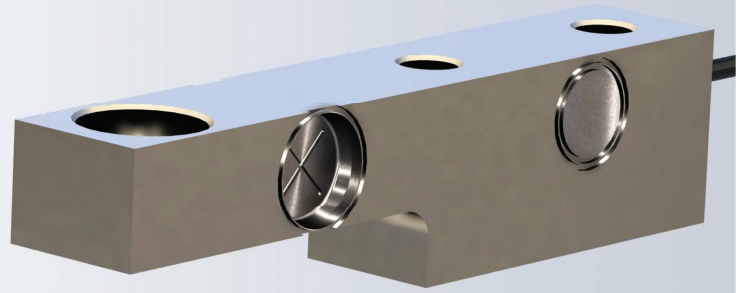


The type SB32 is a stainless steel shear beam type load cell. It is a perfect fit for use in harsh industrial environments.



**FEATURES**

- Capacities from 1klb to 10klb
- Stainless steel construction
- Environmental protection IP68
- CE approved

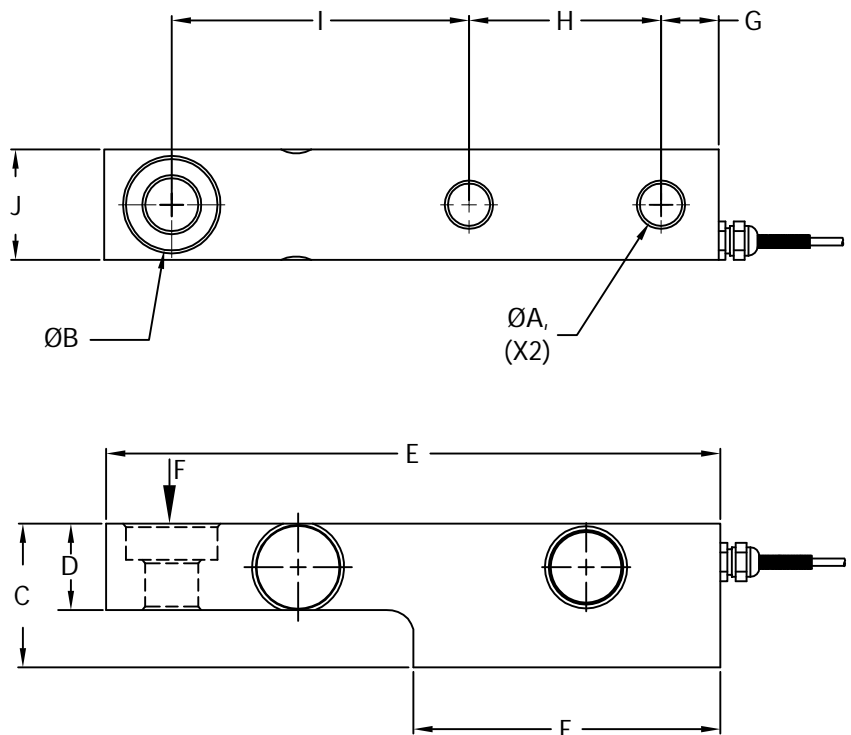
**APPLICATIONS**

- Platform scales, hopper and tank scales

**OPTIONS**

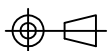
- mV/V/Ω Calibration to ±0.05% for applications with multiple load cells.

**OUTLINE DIMENSIONS**



Capacity (klb)	A	B	C	D	E	F	G	H	I	J
1-5	0.55 [14.0]	0.69[17.5] THRU C'BORE 1.19[30.2] ,0.47[11.9]DP	1.87 [47.5]	1.13 [28.6]	8.00 [203.2]	4.00 [101.6]	0.75 [19.1]	2.50 [63.5]	3.87 [98.3]	1.44 [36.6]
10	0.87 [22.0]	1.00[25.4] THRU C'BORE 1.63[41.4] ,0.62[15.7]DP	2.75 [69.9]	1.88 [47.8]	9.25 [235.0]	4.62 [117.3]	0.81 [20.6]	2.63 [66.8]	4.88 [124.0]	1.88 [47.8]

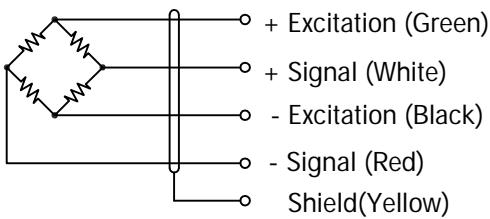
NOTE:  
ALL DIMENSIONS : INCH[MM]  
POSITIVE LOADING DIRECTION IS SHOWN BY ARROW.  
RECOMMENDED BOLT TORQUE FOR M12 OR 1/2-20 12.9 GRADE SCREWS IS 90Nm.



# shear beam SB32 1020



## WIRING



Cable : 24AWG,4-conductor foil shielded black cable.

## SPECIFICATIONS

Model	SB32		
Capacities	klb	1/ 2/ 5/ 10	
Full scale output(FS)	mV/V	2.0±1%	
Non-linearity	%FS	≤±0.023	
Hysteresis	%FS	≤±0.023	
Creep@30min	%FS	≤±0.03	
Zero Balance	%FS	±5	
Temperature effect			
	Output	%FS/10°C	≤±0.04
	Zero	%FS/10°C	≤±0.04
Temperature range			
	Compensated	°C	-10... +40
	Operating	°C	-20... +65
Terminal resistance			
	Input resistance	Ω	386±30
	Output resistance	Ω	350±5
Excitation voltage	VDC	10... 15	
Insulation resistance@50VDC	MΩ	≥5000	
Safe overload limit	%FS	150	
Ultimate load	%FS	200	
Cable length	ft	20	
Seal type	IP68		
Element material	Stainless steel		
Bolt torque	Nm	90	

## PART NUMBERS

Capacity (klb)	Part #
1	1020-000-05
2	1020-001-05
5	1020-002-05
10	1020-003-05

Dimensions and specifications subject to change without notice