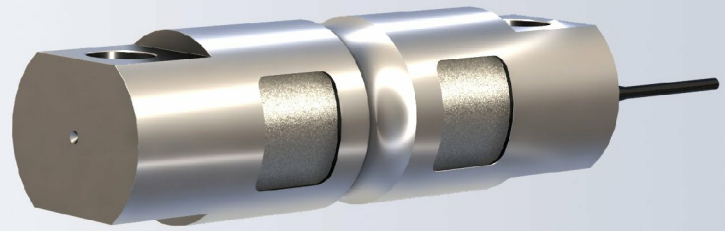


The type 2004 is a steel double ended shear beam, commonly used in general purpose weigh systems and truck scales.



**FEATURES**

- Capacities from 5klb to 200klb.
- Alloy steel construction.
- Environmental Protection IP67.
- NTEP Approved (legal-for-trade) available.

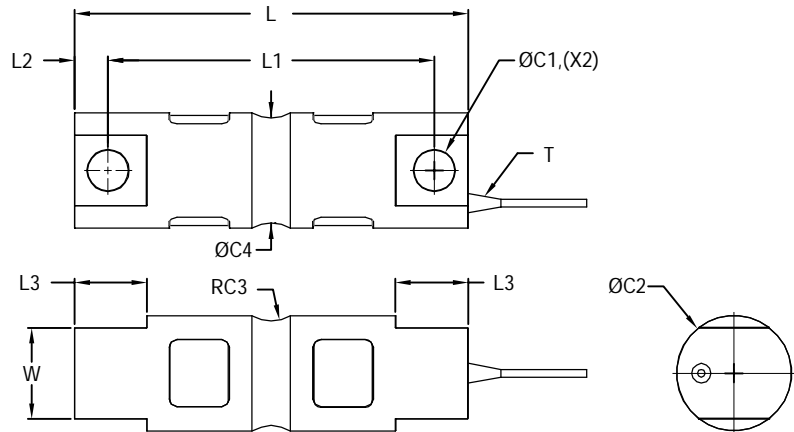
**APPLICATIONS**

- General purpose weigh systems and truck scales.

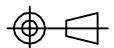
**OPTIONS**

- Service temperature range up to 120°C.
- Stainless steel version.
- 6 Wire circuit.
- Lightning protection.

**OUTLINE DIMENSIONS**

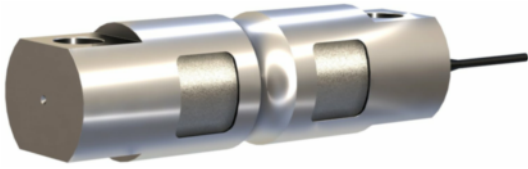


Capacity(klb)	C1	C2	C3	C4	L	L1	L2	L3	W	T
5-20	0.66 [16.7]	1.95 [49.5]	0.50 [12.7]	1.48 [37.6]	8.12 [206.3]	6.88 [174.6]	0.62 [174.6]	1.44 [36.6]	1.12 [28.5]	1/4-18NPT
30-75	1.06 [26.9]	3.00 [76.2]	1.00 [25.4]	2.73 [69.3]	10.25 [260.4]	8.50 [215.9]	8.50 [215.9]	1.88 [47.8]	2.37 [60.2]	1/2-14NPT
100	1.06 [26.9]	3.50 [88.9]	1.50 [38.1]	3.24 [82.3]	11.25 [285.8]	9.50 [241.3]	9.50 [241.3]	1.88 [47.8]	2.50 [63.5]	1/2-14NPT
150	1.06 [26.9]	3.90 [99.1]	1.50 [38.1]	3.64 [92.5]	11.25 [285.8]	9.50 [241.3]	9.50 [241.3]	1.88 [47.8]	2.80 [71.1]	1/2-14NPT
200	1.56 [39.6]	5.38 [136.7]	2.00 [50.8]	5.17 [131.3]	16.10 [408.9]	13.0 [330.2]	13.0 [330.2]	3.05 [77.5]	4.60 [116.8]	1/2-14NPT

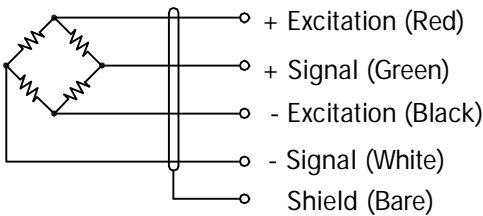


double ended beams

# ADESB 2004



## WIRING



Cable : Ø5.1mm, 4 Conductor cable (Capacity ≤20Klb).  
Ø7.6mm, 4 Conductor cable (Capacity ≥30Klb).

## SPECIFICATIONS

Model	2004	
Capacities	klb	5/ 10/ 20/ 30/ 40/ 50/ 60/ 75/ 100/ 150/ 200
Full scale output (FS)	mV/V	3±0.25%
Non-linearity	%FS	≤±0.03
Hysteresis	%FS	≤±0.023
Non- repeatability	%FS	≤±0.017
Creep @ 30min	%FS	≤±0.023
Zero balance	mV/V	±0.06
Temperature range		
	Operating	°C -10...+40
Bridge resistance	Ω	700±10
Excitation voltage	VDC	10... 15
Insulation resistance@50V DC	MΩ	≥2000
Safe overload limit	%FS	150
Ultimate load	%FS	300
Cable length	m	10 (Capacity≤20Klb) 18 (Capacity≥30Klb)
Seal type	IP67	
Element material	Alloy steel	

Dimensions and specifications subject to change without notice